



How Bias & Prejudice  
Prevent Help Seeking  
by  
Survivors of Color

Gretta Gardner JD • Deputy Director  
2019 North Texas Facing Family Violence Conference  
October 25, 2019 • Plano, TX



---

The National Center on Violence Against  
Women in the Black Community



## Vision:

To create a world where  
Black women and girls are  
valued, respected, safe and  
free from violence.

---

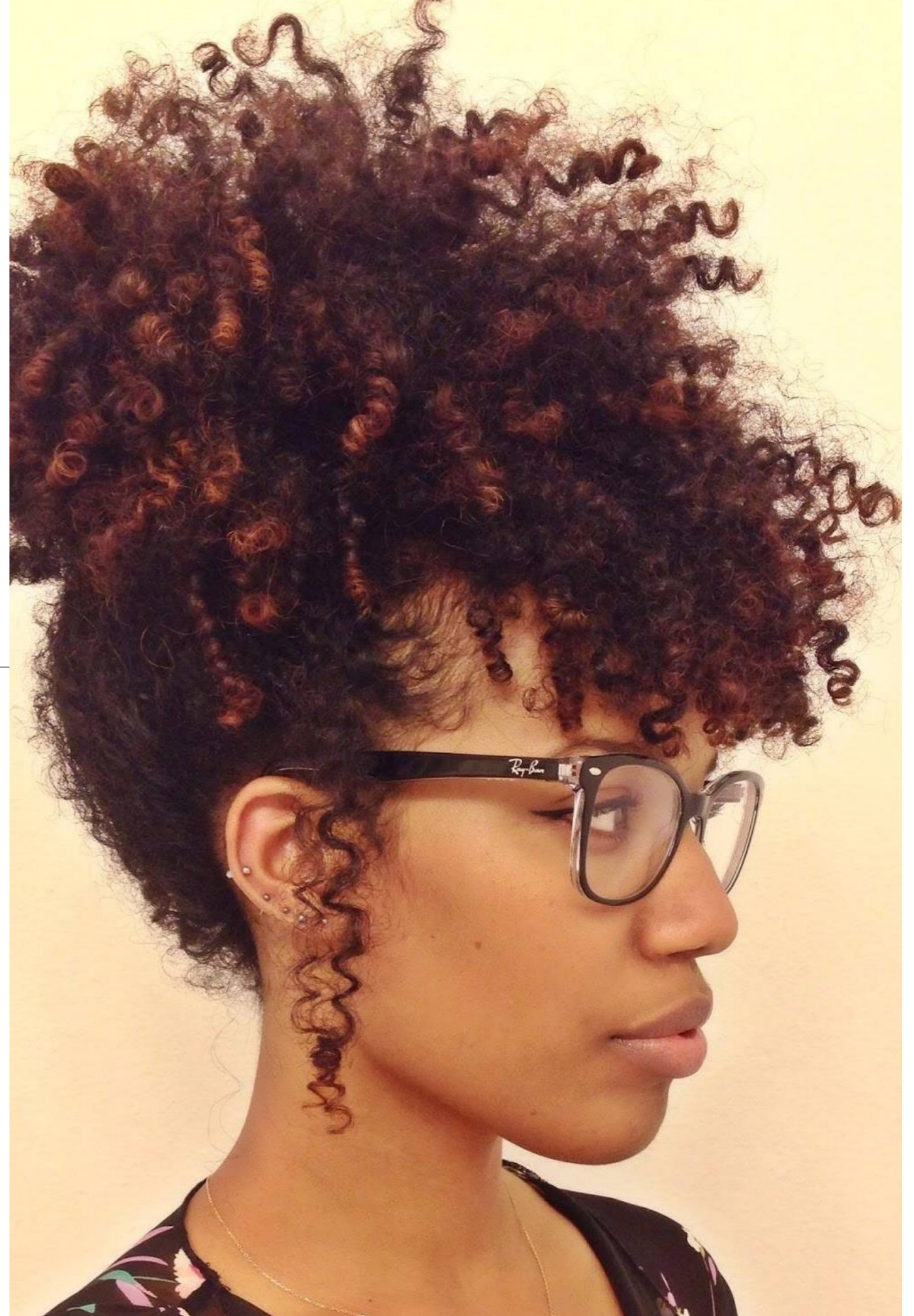
## Mission:

- Mobilize the community
- Respond to and end violence
- Serve as a resource to survivors of violence, advocates, service providers and the community



## Areas of Focus

- Domestic Violence
- Sexual Violence
- Community Violence
- Institutional and Structural Violence





# Language is Important

Cultural Awareness  
Cultural Diversity  
Cultural Inclusion  
Culturally Welcoming  
Cultural Humility



## **RACE**

Social political construct.

Socially constructed & culturally enforced.

Refers to social/cultural physical characteristics attributed to people, e.g., skin color, bone/jaw structure



## **ETHNICITY**

A population whose members identify with each other on the basis of common nationality or shared cultural traditions, e.g., beliefs, language.



## Hispanic or Latinx?

- ❖ Hispanic usually refers to those who speak Spanish.
- ❖ Latinx usually refers to geography (Latin America, Caribbean, South America, & Central America).
- ❖ Usage has become interchangeable and is usually regional.



## **Hispanic or Latinx?**

Someone from Brazil is Latinx, but not Hispanic.

Someone from Spain is Hispanic, but not Latinx.





## **CULTURE**

A body of beliefs, ideas, and ideals used for cohesion and conformity.

For example,  
roles of men and women in:

- ❖ relationships
- ❖ families
- ❖ workplace

# PREJUDICE

Preconceived opinion without just grounds or before sufficient knowledge.

[www.psychologytoday.com](http://www.psychologytoday.com)

Implicit (Covert)

Explicit (Overt)

# **BIAS**

Bias is a tendency, inclination, or prejudice toward or against something or someone. Biases are often based on stereotypes, rather than actual knowledge of an individual or circumstance.

[www.psychologytoday.com](http://www.psychologytoday.com)

**Implicit (Covert)**

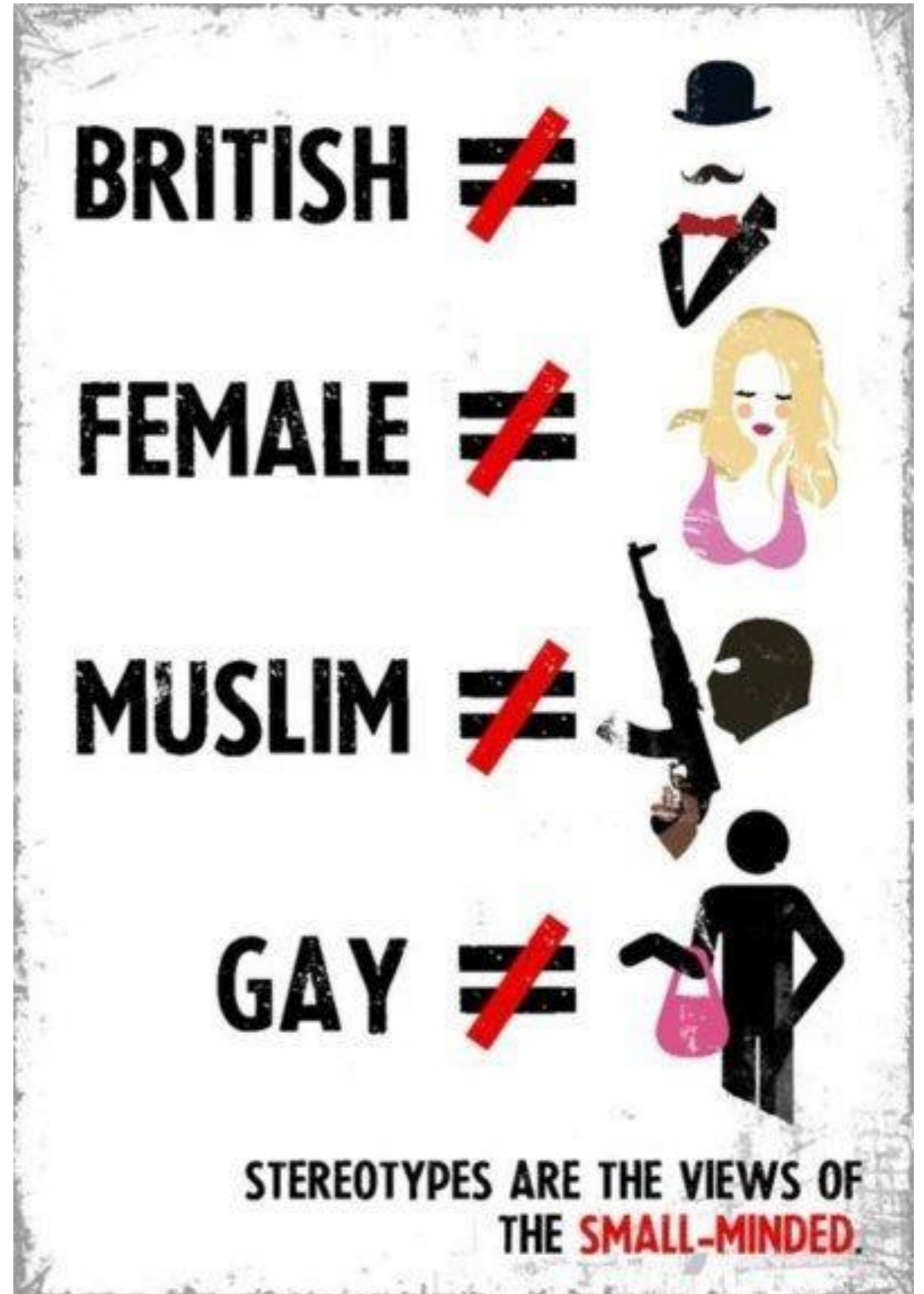
**Explicit (Overt)**



# **STEREOTYPES**

Widely held, but fixed and oversimplified image or idea of a particular type of a person, group, or thing.

Derived from pop culture – movies, media, music.





What is the stereotype?





**BE MINDFUL ABOUT STEREOTYPES!  
ONLY ONE OF THEM IS A CONVICTED FELON.**



## **Generational Cultures**

**Silent:** 1925-1945

**Baby Boomers:** 1946-1964

**Gen X:** 1965-1980

**Millennials (Y):** 1981-2000

**Gen Z:** 2000-





**EXERCISE**



- ❖ DV crimes are going down or are they?
- ❖ Interventions have saved more men than women.  
(Bureau of Justice Statistics 1993-2011)
- ❖ In 2016, Black females were murdered by males at a rate more than twice as high as white females.

*(When Men Murder Women, an Analysis of 2017 Homicide Data, Violence Policy Center, 2019).*



Gretta G. Gardner, JD  
Deputy Director • Ujima, Inc.  
The DC Coalition Against Domestic Violence  
5 Thomas Circle, NW • Washington, DC 20005  
202.299.1181  
ggardner@ujimacommunity.org  
www.ujimacommunity.org

facebook

twitter

 Instagram

@ujimacommunity